

## Boltable load lashing point

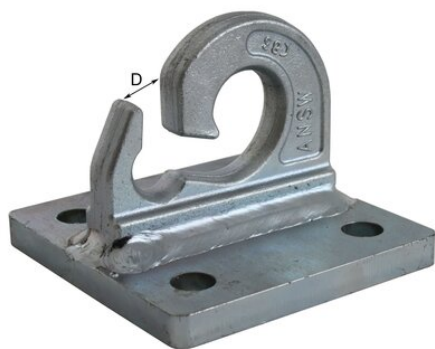
---

### Product information

Robust boltable load lashing point.

... [Read more](#)

---



**Material:** Steel

**Finish:** Non-coated

## Boltable load lashing point

---

### Technical data

Part code	LC daN	MBL ton	Length mm	Width mm	Height mm	D, mm	Weight kg
KIP6000R	3,000	6	100	100	76	11	1