

Lifting eye Screw

Product information



Lifting for all lifting directions.

WLL for vertical lifting is marked on the eye.

The depth of the threaded hole has to be minimum:

d = diameter of the lifting eye thread

- $1*d$ for steel
- $1,25*d$ for cast iron
- $2*d$ for aluminum alloys
- $2,5*d$ for aluminum magnesium alloys

... [Read more](#)

Material: Steel

Marking: According to standard, CE-marked

Temperature range: -40°C - $+200^{\circ}\text{C}$

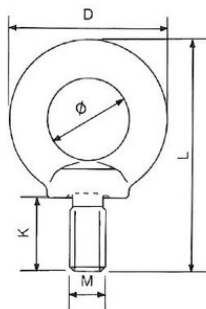
Finish: Painted, yellow

Standard: EN 1677-1

Safety factor: 4:1

Lifting eye Screw


Blueprint



Technical data

Part code	WLL ton	Thread mm	Eye diameter mm	Thread pitch mm	D mm	L mm	K mm	M mm	ø mm mm	Weight kg
11.40NS8R06	0.4	M6	16	1	28	42	13	M6	16	0.05
11.40NS8R08	0.8	M8	20	1,25	39	51	15	M8	20	0.06
11.40NS8R10	1	M10	25	1,5	45	63	18	M10	25	0.11
11.40NS8R12	2	M12	30	1,75	54	75	22	M12	30	0.18
11.40NS8R14	3	M14	35	2	63	88	28	M14	35	0.28
11.40NS8R16	4	M16	35	2	63	88	28	M16	35	0.28
11.40NS8R20	6	M20	40	2,5	72	101	30	M20	40	0.45
11.40NS8R24	8	M24	50	3	90	128	38	M24	50	0.87
11.40NS8R30	12	M30	60	3,5	108	154	45	M30	60	1.66
11.40NS8R36	16	M36	70	4	126	183	55	M36	70	2.65
11.40NS8R42	24	M42	80	4,5	144	212	65	M42	80	4.03
11.40NS8R48	32	M48	90	5	166	238	70	M48	90	6.38

Lifting eye Screw

Size									Tightening torque
	WLL (t)	WLL (t)	WLL (t)	WLL (t)	WLL (t)	WLL (t)	WLL (t)	WLL (t)	
					0 - 45°	45-60°	0 - 45°	45-60°	
M6	0,4	0,15	0,8	0,3	0,21	0,15	0,32	0,23	3,5
M8	0,8	0,32	1,6	0,64	0,448	0,32	0,672	0,48	8
M10	1	0,4	2	0,8	0,56	0,4	0,84	0,6	16
M12	2	0,75	4	1,5	1,05	0,75	1,58	1,13	28
M14	3	1,2	6	2,4	1,68	1,2	2,52	1,8	70
M16	4	1,5	8	3	2,1	1,5	3,15	2,25	70
M20	6	2,3	12	4,6	3,22	2,3	4,83	3,45	135
M24	8	3,2	16	6,4	4,48	3,2	6,72	4,8	230
M30	12	4,5	24	9	6,3	4,5	9,45	6,75	465
M36	16	7	32	14	9,8	7	14,7	10,5	814
M42	24	9	48	18	12,6	9	18,9	13,5	1304
M48	32	12	64	24	16,8	12	25,2	18	1981