

## Stainless steel lifting eye screw DIN 580

---

### Product information



Stainless steel lifting eye for vertical lifting.

[... Read more](#)

**Material:** AISI 316

**Marking:** According to standard, CE-marked

**Temperature range:** -40°C - (+)200°C

**Finish:** Polished

**Standard:** DIN 580

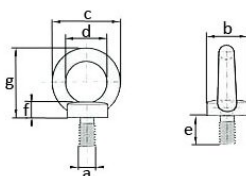
**Note:** Only for vertical lifting

**Warning:** Not to be heat-treated

**Safety factor:** 4:1

## Stainless steel lifting eye screw DIN 580

### Blueprint



### Technical data

| Part code | WLL ton | Thread mm | b mm | c mm | d mm | e mm | f mm | g mm | Weight kg |
|-----------|---------|-----------|------|------|------|------|------|------|-----------|
| NSRH06L   | 0.075   | M6        | 20   | 36   | 20   | 13   | 6    | 36   | 0.06      |
| NSRH08L   | 0.14    | M8        | 20   | 36   | 20   | 13   | 6    | 36   | 0.06      |
| NSRH10L   | 0.23    | M10       | 25   | 45   | 25   | 17   | 8    | 45   | 0.11      |
| NSRH12L   | 0.34    | M12       | 30   | 54   | 30   | 20.5 | 10   | 53   | 0.18      |
| NSRH16L   | 0.7     | M16       | 35   | 63   | 35   | 27   | 12   | 62   | 0.28      |
| NSRH20L   | 1.2     | M20       | 39   | 71   | 39   | 30   | 14   | 70   | 0.45      |

### WORKIN LOAD LIMITS

| Thread | WLL (t) | WLL (t) | WLL (t) | WLL (t) | WLL (t) | WLL (t) | WLL (t) | WLL (t) |
|--------|---------|---------|---------|---------|---------|---------|---------|---------|
|        |         |         |         |         | 0 - 45° | 45-60°  | 0 - 45° | 45-60°  |
| M6     | 0,08    |         | 0,16    |         | -       |         | -       |         |
| M8     | 0,14    |         | 0,28    |         | 0,1     |         | 0,14    |         |
| M10    | 0,23    |         | 0,46    |         |         |         |         |         |