

Electric wire hoist for lifting and pulling 230 V / 50 Hz

Product information

Light and easy to operate electrical winch for pulling and lifting. Equipped with remote control, latch hook and overload indicator.

Note! Cable operating lengths:

- **VANOS250:** 6.8 mtr
- **VANOS450:** 3.4 mtr

... [Read more](#)

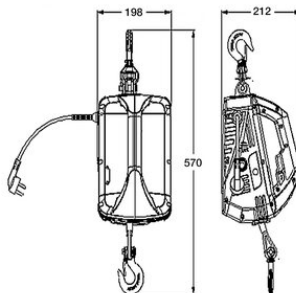


Features: Speed 5 m/min | Remote control range 8 m (unobstructed view)

Marking: CE-marked

Electric wire hoist for lifting and pulling 230 V / 50 Hz

Blueprint

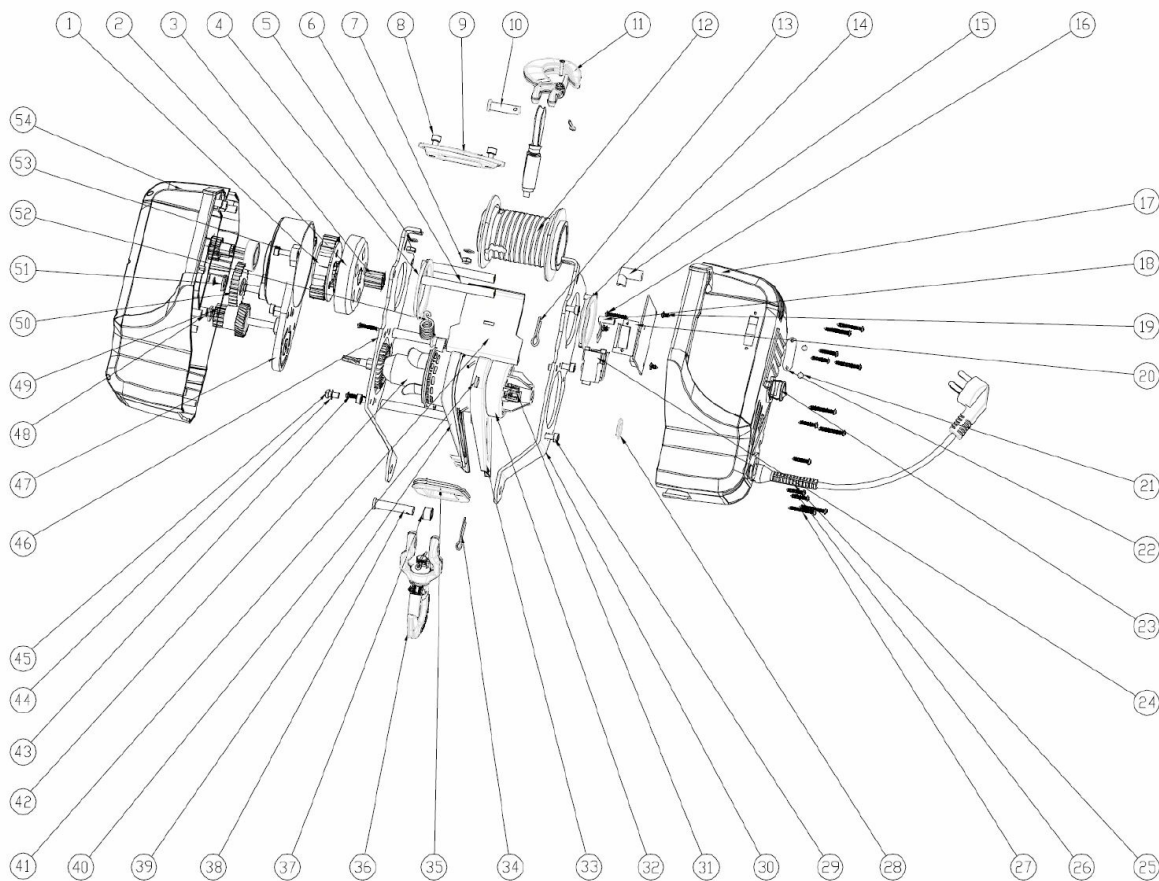


Technical data

Part code	WLL ton	Operation voltage (V)	Rope length m	Motor kW	Weight kg
VANOS250	0.25	230	8	1.2	7
VANOS450	0.45	230	4.6	1.2	7

SPARE PARTS

Electric wire hoist for lifting and pulling 230 V / 50 Hz



Electric wire hoist for lifting and pulling 230 V / 50 Hz

Spare part (product code)	Description	Suitable for hoist (product code/-s)
VANOSVAI8	Wire rope 8 m \varnothing 4,8 mm, effective working length 6,8 m Incl. drum	VANOS250
VANOSVAI4,6	Wire rope 4,6 m \varnothing 5,8 mm, effective working length 3,4 m Incl. drum	VANOS450
VANOSKAUKO	Remote control Part no. 55	VANOS250, VANOS450
VANOSHILI	Coal Note! 2 pcs/hoist	VANOS250, VANOS450
VANOSVO3	Spline shaft Part no. 3	VANOS250, VANOS450
VANOSV09	Wire rope hole guiding plate Part no. 9	VANOS250, VANOS450
VANOSVO20	Circuit board set Part no. 20	VANOS250, VANOS450
VANOSVO25	Power cord set Part nos. 25 and 28 (plastic snap ring)	VANOS250, VANOS450
VANOSVO41	Pressure plate Part no. 41	VANOS250, VANOS450
VANOSVO52	Pressure plate's tension spring Part no. 52	VANOS250, VANOS450
VANOSYKOU	Top swivel hook, incl. fasteners Part no. 36	VANOS250, VANOS450
VANOSAKOU	Bottom hook, incl. fasteners Part no. 11	VANOS250, VANOS450

Also other spare parts available with a delivery time, ask our sales for more information